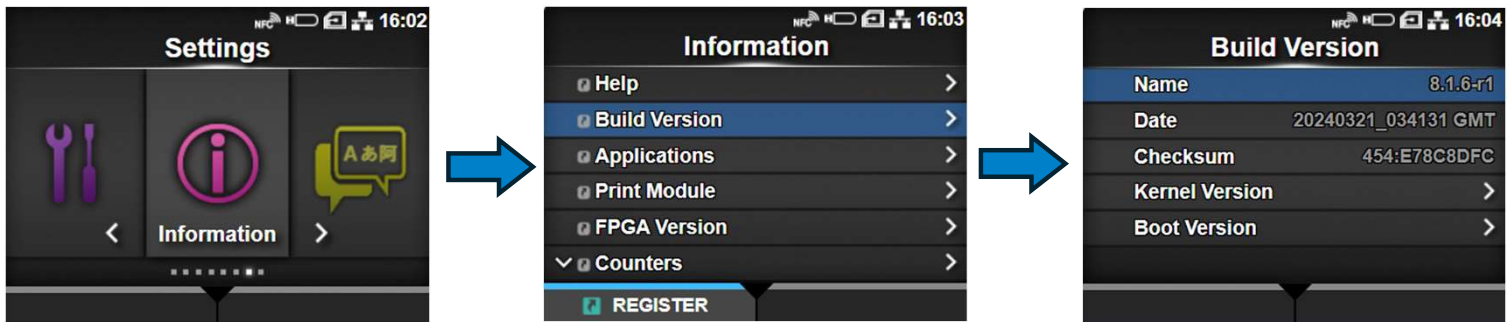


TT-006 Load a new Firmware File

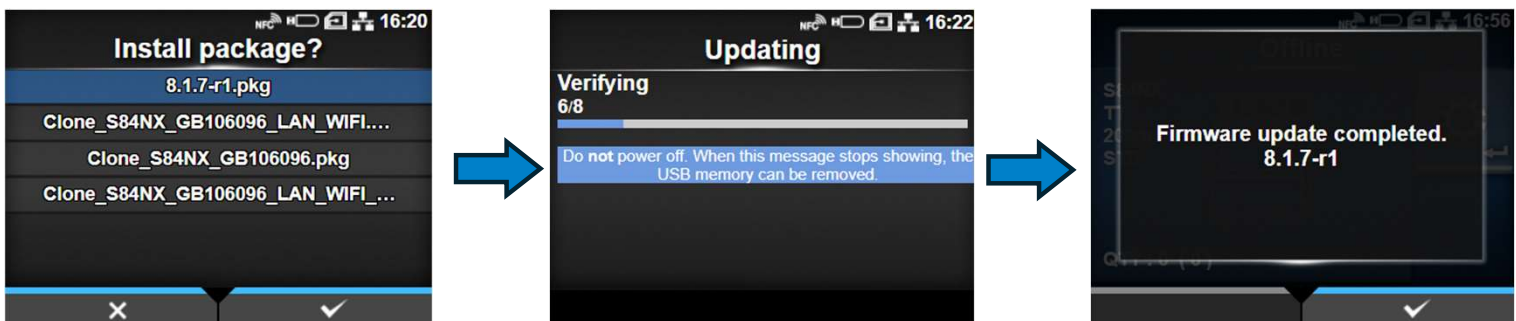
S84NX/S86NX

WARNING: It is recommended to save a clone file before updating firmware versions. See TT-002 for instructions on how to Save a Clone File before loading a new firmware.

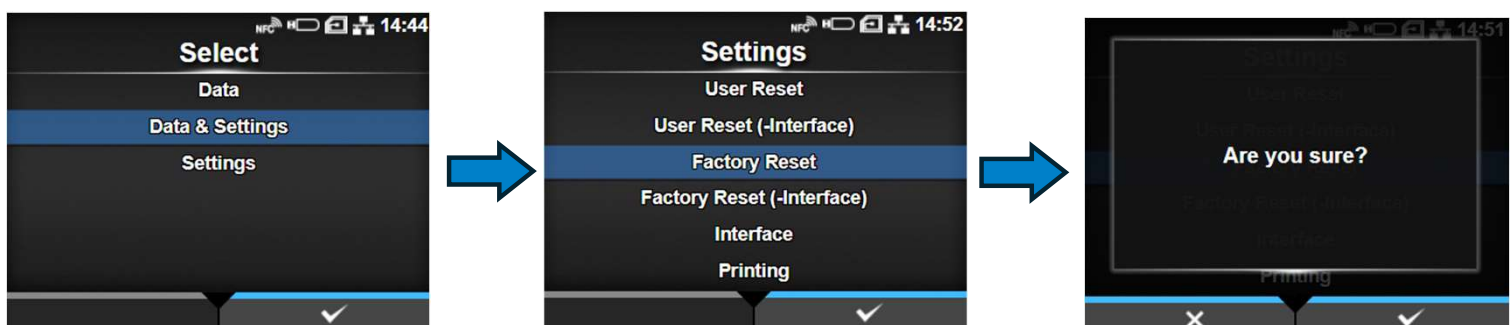
1. You can check what firmware version is installed on your printer by going to the settings menu → Information → Build Version:



2. Save the firmware file (.pkg) to the root of a USB stick and insert it into one of the USB-A ports. The printer will recognize the .pkg file and a prompt will ask if you want to “Install Package”. Select the firmware file you want to install and press the right soft key (check mark) to proceed. You may need to reboot the printer if the prompt screen does not appear after inserting the USB stick. This process can take several minutes to complete.



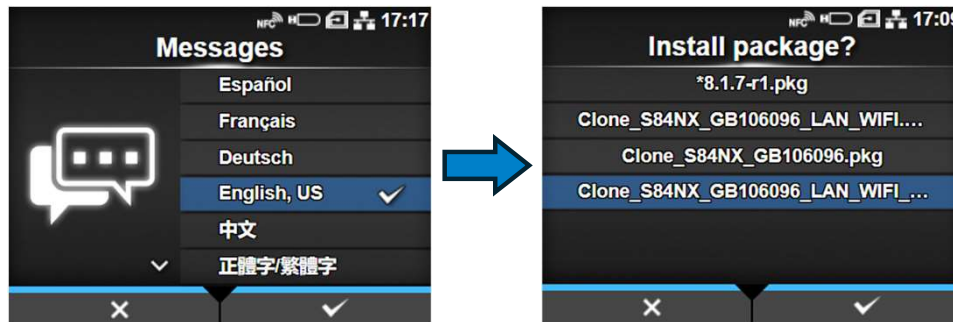
3. After the Firmware Update is complete, you will want to perform a Factory Reset. (Settings → Tools → Reset → Data & Settings → Factory Reset). See TT-005 for more detailed instructions.



TT-006 Load a new Firmware File

S84NX/S86NX

- After completing the Factory reset, you can Load a previously saved Clone File to restore your settings. Navigate through the Setup Wizard and then insert a USB stick with the Clone file you wish to load. See TT-002 for more detailed instructions on loading a Clone file.



- It is also an option to use the WebConfig tool or the SATO All-In-One tool to load a Firmware file if connected via LAN/Wifi. Note: If performing a factory reset, you will need to load a clone file with IP settings or manually enter the IP address to reconnect with the WebConfig or All-In-One Tool.

